



powder



industrial



automotive



wood

BATCH POWDER BOOTHS

- **HEAVY DUTY CONSTRUCTION**
- **LOW MAINTENANCE**
- **EASY TO ASSEMBLE**
- **SPRAY-TO-WASTE DESIGN**
- **RECIRCULATES SHOP AIR—
NO AIR MAKEUP NEEDED**

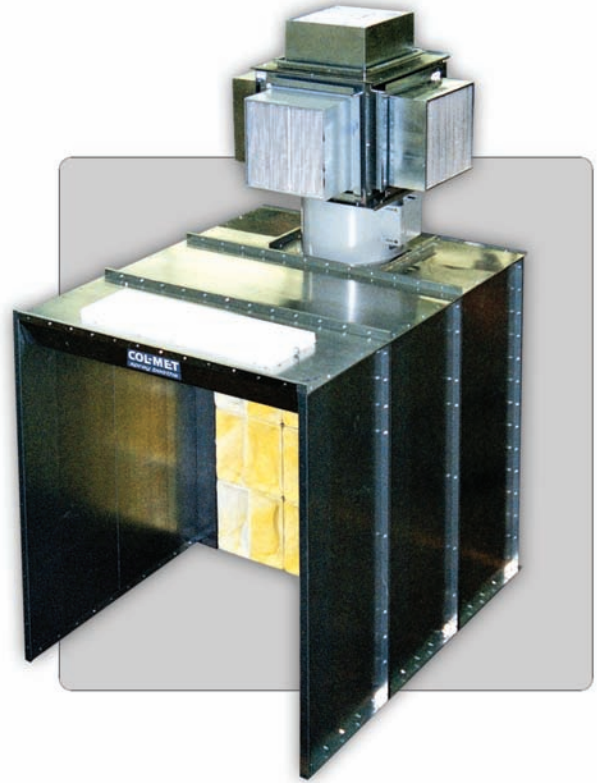
These floor model booths make efficient use of shop space and are designed for batch powder coating with no provisions for powder reclamation.

Air is drawn in through the open front of the spray booth, passes through the booth's working area into the filtered exhaust plenum. The air is filtered in three stages and discharged back into the room. One set of filters will be provided with each booth.

- 1st stage – blanket style filter
- 2nd stage – bag style filter
- 3rd (final) stage – cartridge style filter

LIGHTING FEATURES

Lighting is provided by 48" fluorescent 32-watt, T-8 type fixtures (four-tube), mounted behind safety glass, appropriately sealed from the interior of the spray booth. All fixtures are UL listed and approved for their intended use and placement.



POWDER EXHAUST FILTER PROVING ASSEMBLY

CONSTRUCTION FEATURES AND QUALITY STANDARDS

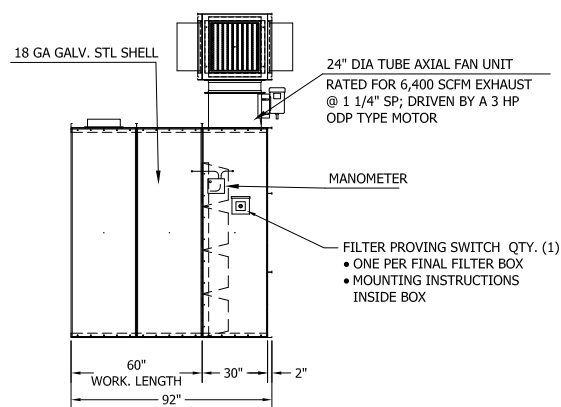
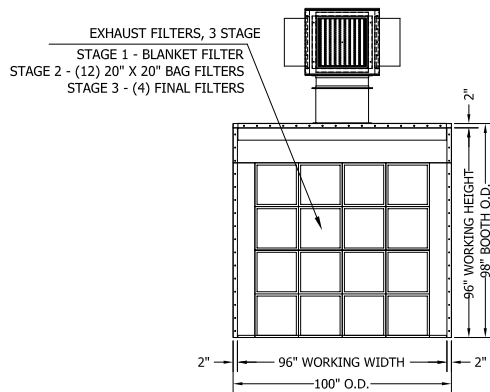
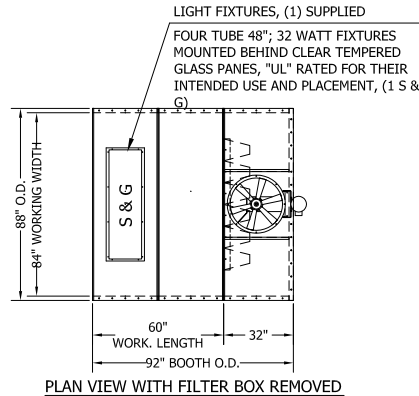
- Booths are constructed from 18 gauge, prime-quality galvanized steel
- All panels and support members are precision punched for easy nut and bolt assembly
- Quality brand-name tubeaxial fans and ODP motors
- 5/16" inch bolts with self locking nuts
- Industry-leading light levels
- Spray booth specific, dual voltage T-8 32-watt light fixtures
- Booths include installation instructions, fan, motor & drive, fasteners, hardware, and sealant necessary for assembly
- Air solenoid valve and filter proving assembly included
- Control panel purchased separately

COL-MET SPRAY BOOTHS COMPLY WITH ALL APPLICABLE OSHA AND NFPA REGULATIONS.



BATCH POWDER BOOTHS

Model Number	Interior Dimensions			Exterior Dimensions			Total CFM	Fan Specs.			Lights S&G
	Width	Height	Length	Width	Height	Length		Qty.	Dia.	HP	
PB-0407	4'-0"	7'-0"	5'-0"	4'-4"	12'-0"	7'-8"	2,800	1	18"	1½	1
PB-0607	6'-0"	7'-0"	5'-0"	6'-4"	12'-0"	7'-8"	4,200	1	24"	2	1
PB-0807	8'-0"	7'-0"	5'-0"	8'-4"	12'-0"	7'-8"	5,600	1	24"	3	1
PB-1007	9'-8"	7'-0"	5'-0"	10'-0"	12'-6"	8'-8"	7,000	1	30"	3	2
PB-1207	11'-8"	7'-0"	7'-0"	12'-0"	12'-6"	11'-2"	8,400	1	30"	5	2
PB-1407	14'-0"	7'-0"	7'-0"	15'-0"	12'-6"	11'-2"	10,000	1	30"	5	2
PB-1607	16'-0"	7'-0"	7'-0"	17'-0"	12'-6"	11'-2"	11,200	2 (5600CFM)	24"	3	2
PB-0408	4'-0"	8'-0"	5'-0"	4'-4"	12'-0"	7'-8"	3,200	1	18"	2	1
PB-0608	6'-0"	8'-0"	5'-0"	6'-4"	12'-0"	7'-8"	4,800	1	24"	2	1
PB-0808	8'-0"	8'-0"	5'-0"	8'-4"	12'-0"	7'-8"	6,400	1	24"	3	1
PB-1008	9'-8"	8'-0"	5'-0"	10'-0"	12'-6"	8'-8"	8,000	1	30"	3	2
PB-1208	11'-8"	8'-0"	7'-0"	12'-0"	12'-6"	11'-2"	9,600	1	30"	5	2
PB-1408	14'-0"	8'-0"	7'-0"	15'-0"	12'-6"	11'-2"	11,200	2 (5600CFM)	24"	3	2
PB-1608	16'-0"	8'-0"	7'-0"	17'-0"	12'-6"	11'-2"	12,800	2 (6400CFM)	24"	3	2
PB-0410	4'-0"	10'-0"	5'-0"	4'-4"	12'-6"	7'-8"	4,000	1	24"	2	1
PB-0610	6'-0"	10'-0"	5'-0"	6'-4"	12'-0"	7'-8"	6,000	1	24"	3	1
PB-0810	8'-0"	10'-0"	5'-0"	8'-4"	12'-0"	7'-8"	8,000	1	30"	3	1
PB-1010	9'-8"	10'-0"	5'-0"	10'-0"	12'-0"	8'-8"	10,000	1	30"	5	2
PB-1210	11'-8"	10'-0"	7'-0"	12'-0"	12'-6"	11'-2"	12,000	2 (6000CFM)	24"	3	2
PB-1410	14'-0"	10'-0"	7'-0"	15'-0"	12'-6"	11'-2"	11,200	2 (7000CFM)	30"	3	2
PB-1610	16'-0"	10'-0"	7'-0"	17'-0"	12'-6"	11'-2"	16,000	2 (8000CFM)	30"	5	2



Col-Met Spray Booths
 Dallas, TX // e-mail: sales@colmetsb.com
 Toll-free: 888.452.6684 // www.colmetsb.com