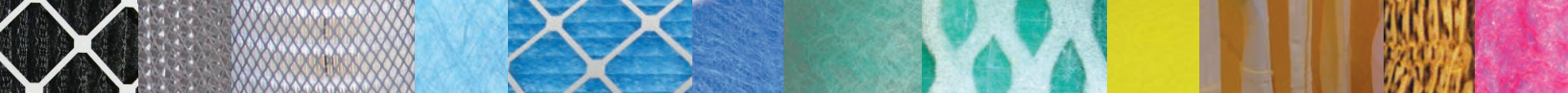


CHEMCO

PRODUCT CATALOG





CHEMCO COMPANY HISTORY

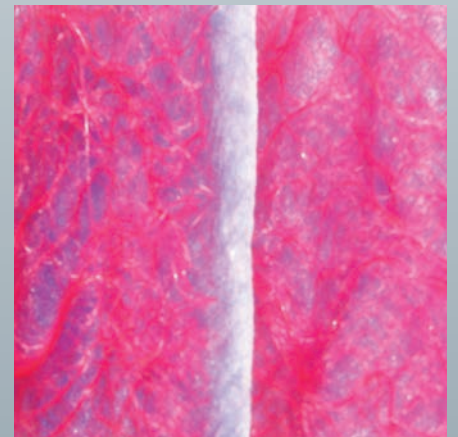
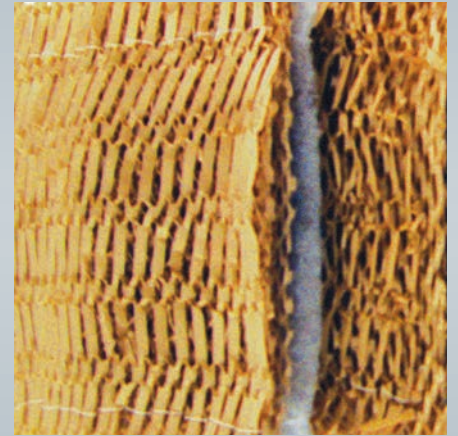
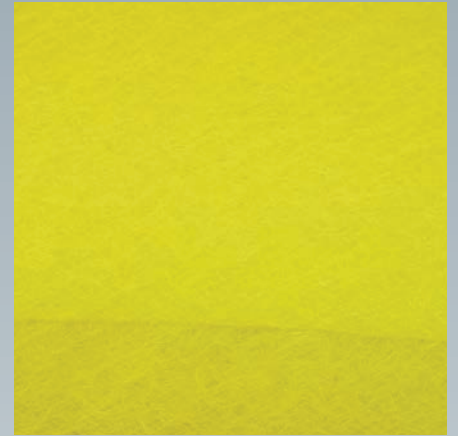
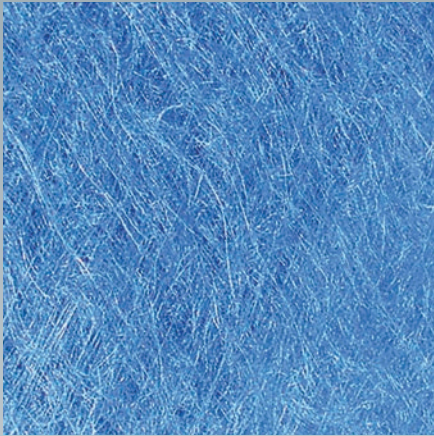
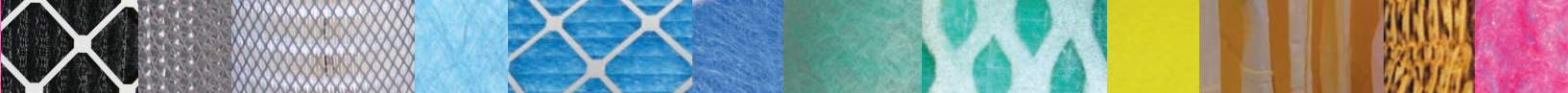
Throughout our 50 year history, Chemco Manufacturing Company has re-defined the art of coatings, filtration, and spray booth maintenance. Robert Spiegel, a chemist, founded the company in 1964. Mr. Spiegel recognized the fact that significant innovations had to be developed and implemented in order to find solutions for existing overspray collector technology shortcomings. As a result of his commitment to excellence and innovation, he developed and introduced the first spun-bond fiberglass paint arrestor. Today, fiberglass paint arrestors have yet to be equaled for their high capture efficiencies and holding capacities, all at a lower cost of purchase.

Currently, Chemco Manufacturing is still an innovative filtration company that is constantly striving to build “a better mousetrap.” We always provide our customers with quality products that are environmentally compatible to meet and exceed their needs. For nearly half a century, Chemco’s vision and leadership in manufacturing, sales and marketing have been unmatched in the spray booth and filtration industry. Chemco sees the value in surrounding itself with the highest quality employees in their respective fields, people with innovative forward thinking ideas that have an understanding and commitment to uncompromised customer satisfaction. That is why Chemco, its team and products are considered to set “The Standard of Excellence in the Industry.”



CONTENTS

■	PAINT ARRESTORS	3
	Fiberglass Paint Arrestors	
	Specialty Paint Arrestors	
	Polyester Paint Arrestors	
	Pocket Bag Filters	
■	INTAKE/HVAC FILTERS	11
■	POWDER AND DUST CARTRIDGES ..	15
■	FINAL FILTERS	19
■	FLOOR COVERING	22
■	REMOVABLE SPRAY BOOTH COATINGS	25
■	ACCESSORIES	28
	Pressure Pot Liners	
	Protective Film	
	Frames, Grids, Manometer	
■	TERMS AND CONDITIONS	31

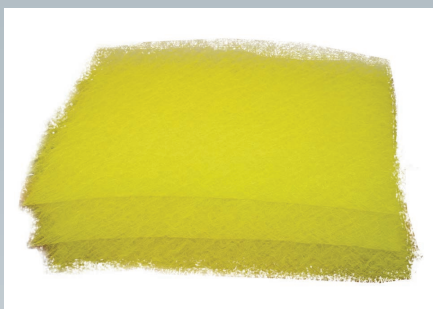


PAIN ARRESTORS





Slim



T-12



Duo



Mono

FIBERGLASS PAINT ARRESTORS

SLIM

A long-time favorite among government and military installations, the SLIM is a 1" orange/white thick all-purpose economy paint arrestor filter designed for use as a pre-filter or with two filters in tandem. The SLIM provides basic overspray efficiency at a minimal cost. The efficiency rating for this filter is 98.75%.

CATALOG NUMBER	DIMENSIONS	PACKAGING
2020SP	20"x20"	100/case
2025SP	20"x25"	100/case
RROLLSLM	300' roll	Each
Available roll widths 20", 25", 30", 36", 42", 48", 60", 72", 84", 96"		

T-12

An economical choice for general purpose spray applications, its bright yellow highly visible color provides added spray booth illumination while maintaining optimal air flow. This 2" filter pad is a general spray application use filter at an attractive price point. The efficiency rating for this filter is 98.3%.

CATALOG NUMBER	DIMENSIONS	PACKAGING
2020T12	20"x20"	100/case
2025T12	20"x25"	100/case
YROLLT12	300' roll	Each
Available roll widths 20", 25", 30", 36", 42", 48", 60", 72", 84", 96"		

DUO

Our DUO is one of the most popular paint arrestors in use throughout the United States. Chemco's classic DUO filter features a progressive density construction that meets the needs of the widest variety of finishing applications. This filter is designed to provide longevity, efficiency, and economy for most painting applications. This 2" thick filter is white/green in color. This filter has an efficiency rating of 98.21%.

CATALOG NUMBER	DIMENSIONS	PACKAGING
2020DP	20"x20"	100/case
2025DP	20"x25"	100/case
GROLLDUO	300' roll	Each
Available roll widths 20", 25", 30", 36", 42", 48", 60", 72", 84", 96"		

MONO

Chemco's second most popular paint arrestor, the MONO was designed with wood workers and heavy coating applications in mind. Its unique "open face" design eliminates face loading while utilizing progressive density technology to ensure longevity and efficiency. This 2" thick filter pad is white in color with an efficiency rating of 98.66%.

CATALOG NUMBER	DIMENSIONS	PACKAGING
2020MP	20"x20"	100/case
2025MP	20"x25"	100/case
WROLLMON	300' roll	Each
Available roll widths 20", 25", 30", 36", 42", 48", 60", 72", 84", 96"		

PD

Chemco's PD Media is a beefier version of our popular DUO. This 2" green top filter features a progressive density construction that meets the needs of the widest variety of finishing applications. The efficiency rating of this filter is 98.95%.

CATALOG NUMBER	DIMENSIONS	PACKAGING
2020PD	20"x20"	100/case
2025PD	20"x25"	100/case
GROLLPD	300' roll	Each
Available roll widths 20", 25", 30", 36", 42", 48", 60", 72", 84", 96"		

GPF ULTRA

Chemco's GPF Ultra offers finishers the capability of using an ultra-high efficiency filter at a competitive cost. GPF Ultra can be used as a standalone filter or pre-filter. This 1 5/8" thick filter is green/yellow in color and can be used with a wide range of finishes. GPF Ultra is a popular choice for those trying to stop as much paint and finish particulate as possible. GPF Ultra provides high paint holding capacity and can replace conventional 2" dense polyester filtration without sacrificing extended service life. This efficiency rating of this filter is 99.43%.

CATALOG NUMBER	DIMENSIONS	PACKAGING
2020GPF	20"x20"	100/case
2025GPF	20"x25"	100/case
ROLLGPF	300' roll	Each
Available roll widths 20", 25", 30", 36", 42", 48", 60", 72", 84", 96"		

FMP-18

Chemco's FMP-18 features a unique micro-filament fiber structure and technology that dramatically increases the filter's area while optimizing air flow. This open weave design promotes depth loading. Due to its smaller fiber diameter, Chemco's FMP-18 contains 33% more fiber strands than a standard fiberglass filter. Its heavy weight provides maximum efficiency without a drastic increase in cost. This highly visible 2.5" yellow colored filter has an efficiency rating of 99.07%.

CATALOG NUMBER	DIMENSIONS	PACKAGING
2020FMP18	20"x20"	100/250 case
2025FMP18	20"x25"	100/200 case
ROLLFMP18	300' roll	Each
Available roll widths 20", 25", 30", 36", 42", 48", 60", 72", 84", 96"		

T-22YX

Our T22YX filter is a 2.5" thick fiberglass media that is widely used in automotive down draft applications. This filter features 50% more surface area than standard paint arrestors for operations that require added efficiency and longevity. This white with a yellow exit filter has an efficiency rating of 99.03%.

CATALOG NUMBER	DIMENSIONS	PACKAGING
2020T22YX	20"x20"	100/250 case
2025T22YX	20"x25"	100/200 case
YXROLLT22	300' roll	Each
Available roll widths 20", 25", 30", 36", 42", 48", 60", 72", 84", 96"		

**Chemco will custom cut all fiberglass paint arrestors to any length using standard available roll widths.
Call for availability.**

**PD****GPF Ultra****FMP-18****T-22YX**

PAINT ARRESTORS



HS-2



Maxguard



Aqua 1



BTO

HS-2

This open face layered fiberglass media with Polyester backing is an economical choice for finer particulate capture found in quick dry and powder coating applications. This filter pad efficiency rating is 99.35%.

CATALOG NUMBER	DIMENSIONS	PACKAGING
2020HS2	20"x20"	100/case
2025HS2	20"x25"	100/case
PROLLHS2	300' roll	Each
Available roll widths 20", 25", 30", 36", 42", 48", 60", 72", 84", 96"		

MAXGUARD

MAXGUARD is one of the best overspray collectors available today. Unlike any filter in the market, the MAXGUARD features two distinct layers of fiberglass protection with a poly backing. The layers complement each other to provide unmatched longevity, paint holding capacity, and efficiency resulting in low in-use cost. Its unique three tone color range allows an operator to effectively determine the filter's service life while providing uncompromising particle efficiency and longevity. This open face filter can master all coatings and finishes. This filter pad efficiency rating is 99.10%.

CATALOG NUMBER	DIMENSIONS	PACKAGING
2020MPB	20"x20"	100/case
2025MPB	20"x25"	100/case
ROLLMPB	200' roll	Each
Available roll widths 20", 25", 30", 36", 42", 48", 60", 72", 84"		

AQUA 1

The Aqua-1 is the only industry paint arrester designed exclusively for water-borne coatings and finishes. The AQUA 1 is comprised of a proprietary non-soluble binder that allows for an exceptionally long service life. This filter is light blue in color and has an efficiency rating of 98.90%.

CATALOG NUMBER	DIMENSIONS	PACKAGING
2020AQ1	20"x20"	100/case
2025AQ1	20"x25"	100/case
BROLLAQ1	300' roll	Each
Available roll widths 20", 25", 30", 36", 42", 48", 60", 72", 84", 96"		

BTO

This 2.5" thick highly specialized fiberglass filter has been tackified for use with higher efficiency applications, rapid air-dry paints and dust. The efficiency of this filter is over 99.49%.

CATALOG NUMBER	DIMENSIONS	PACKAGING
2020BTO	20"x20"	100/case
2025BTO	20"x25"	100/case
BROLLBTO	300' roll	Each
Available roll widths 20", 25", 30", 36", 42", 48", 60", 72", 84", 96"		

**Chemco will custom cut all fiberglass paint arrestors to any length using standard available roll widths.
Call for availability.**

POLYESTER PAINT ARRESTORS

N-POLY

N-Poly is a standard 1" medium-loft paint arrestor. As a single layer, its construction provides maximum efficiency and optimal air flow. N-Poly is also widely popular as a pre-filter in multi-stage wet and spray-to-waste powder coating applications. Efficiency rating of this filter is 99.93%.

CATALOG NUMBER	DIMENSIONS	PACKAGING
2020NPOLY	20"x20"	50/case
2025NPOLY	20"x25"	50/case
NROLLPOLY	90' roll	Each
Available roll widths 20", 25", 30", 36", 40", 50", 60", 72", 84", 90"		

CHEMLOFT

Chemco's ChemLoft overspray collector is a 2" high-loft filter with extended service life and efficiency. The ultimate in particle efficiency, ChemLoft rapidly eliminates most by-pass challenges for the widest range of coatings. Like N-Poly, ChemLoft serves double-duty as a liquid paint arrestor and powder coating pre-filter. Efficiency rating is 99.98%.

CATALOG NUMBER	DIMENSIONS	PACKAGING
2020CLOFT	20"x20"	25/case
2025CLOFT	20"x25"	25/case
ROLLCLOFT	60' roll	Each
Available roll widths 20", 25", 30", 36", 48", 60", 72", 84", 90"		

PAINT POCKETS®

Paint Pockets® unique design holds up to five times more overspray than other filters, enabling you to cut your filter changes by up to 80%. The three-dimensional "pockets" embedded in the front face of Paint Pockets® more than double its surface area, allowing the arrestor to capture and hold very large quantities of overspray. Paint Pockets® is available in both pads and rolls in a white (PPW) and green (PPG) version.

Paint Pockets® white efficiency rating is 99.84% and green is slightly less @ 99.43%.

WHITE PAINT POCKETS®

CATALOG NUMBER	DIMENSIONS	PACKAGING
202030PPW	20"x20"	30/case
202530PPW	20"x25"	30/case
WROLLPP	50' roll (white)	Each
Available roll widths 24", 30", 36", 40", 45", 48", 60"		

GREEN PAINT POCKETS®

CATALOG NUMBER	DIMENSIONS	PACKAGING
202040PPG	20"x20"	40/case
202540PPG	20"x25"	40/case
GROLLPP	60' roll (green)	Each
Available roll widths 24", 30", 36", 40", 48", 60"		



N-Poly



Chemloft



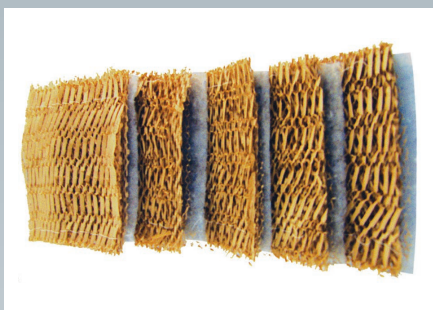
White Paint Pockets®



Green Paint Pockets®



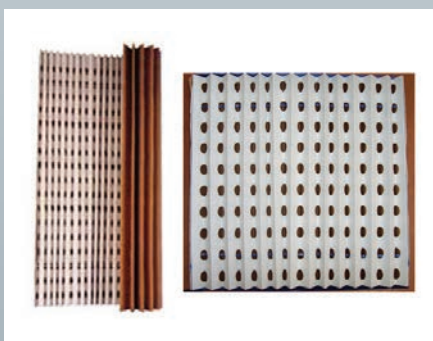
Expanded Paper Filter



Expanded Paper Filter with Poly Back



Superpad



Chemco Accordion Style Cardboard

SPECIALTY PAINT ARRESTORS

EXPANDED PAPER FILTER

The Chemco PMM paint arrestor is a 6 paper layer honeycomb design. Often used as a pre-filter, it can be used in tandem to increase efficiency. The PMM provides modest efficiency with steady airflow. The efficiency rating (not in tandem) is 97.33%.

CATALOG NUMBER	DIMENSIONS	PACKAGING
2020BKPM	20"x20"	70/case
2025BKPM	20"x25"	70/case
BLKPM	45" wide rolls	Each
Available roll lengths 30', 40'		

EXPANDED PAPER FILTER WITH POLY BACK

Our PS2 adds efficiency to the PMM technology by bonding it to a non-woven high efficiency polyester backing. Again, like PMM, the PS2 provides longevity and steady airflow but with far superior arrestance efficiency. The efficiency rating is 99.37%.

CATALOG NUMBER	DIMENSIONS	PACKAGING
2020BKPS2	20"x20"	60/case
2025BKPS2	20"x25"	60/case
BLKPS2	45" wide rolls	Each
Available roll lengths 6', 7', 8', 30', 40'		

SUPERPAD

Our SUPERPAD replaces all older Styrofoam baffle filter technology. The filter is made up of 100% polystyrene which completely dissolves in most waste thinner. It also is compact and stackable for minimal freight charges. The SUPERPAD will outperform most Styrofoam paint arrestors on the market today.

CATALOG NUMBER	DIMENSIONS	PACKAGING
202020SUPER	20"x20"	20/case

CHEMCO ACCORDION STYLE CARDBOARD

An industry classic, Chemco offers a full line of Accordion Style Cardboard filters. The traditional accordion style design provides consistent air flow and efficiency with an extended service life. The efficiency rating is 98.17%.

CATALOG NUMBER	DIMENSIONS	PACKAGING
2020BKAF	20"x20"	40/case
2025BKAF	20"x25"	40/case
3630BLKAF	36"x30'	Each

CHEMCO ACCORDION STYLE CARDBOARD w/POLY BACKING

Our Accordion filter with a Poly Backing is designed for higher efficiency. The efficiency rating for the Poly Back Cardboard filter is 98.61%.

CATALOG NUMBER	DIMENSIONS	PACKAGING
3630BLKAFF	36"x30'	Each

CHEMCO POCKET BAG FILTERS

Polyester pocket filters are ideal for use in multi-stage spray booths. Constructed with high performance environmentally safe, polyester media. Pocket filters are tear resistant and won't rupture before or after installation. The optional galvanized metal header or self-sealing pocket ring eliminates racking and distortion. The pocket configuration in each filter results in even airflow, full inflation and minimal resistance. Deep pockets allow for optimal paint holding capacity and protracted service life. Typical applications include industrial and automotive spray booths, powder coating operations, HVAC, and a variety of additional industrial uses.

ONE LAYER EP MEDIA 2 POCKET BAG FILTER

This economical filter is a 2 pocket self sealing filter used for wet spray and powder coating applications.

CATALOG NUMBER	SIZE
202015BAFG	20"x20"x15"
202515BAFG	20"x25"x15"
242415BAFG	24"x24"x15"
202015BAFCIF*	20"x20"x15"
202515BAFCIF*	20"x25"x15"
242415BAFCIF*	24"x24"x15"

*Carbon impregnated media

ONE LAYER TACKY 2 POCKET BAG FILTER

Chemco's tackified 2 pocket bag self sealing extended surface area filter is primarily used in wet spray applications.

CATALOG NUMBER	SIZE
202015BAFGT	20"x20"x15"
202515BAFGT	20"x25"x15"
242415BAFGT	24"x24"x15"

ONE LAYER TACKY, ONE LAYER 45% MEDIA

This tackified 2 pocket bag self sealing filter with extended surface area has a higher efficiency rating.

CATALOG NUMBER	SIZE
202015BAFGT2	20"x20"x15"
202515BAFGT2	20"x25"x15"
242415BAFGT2	24"x24"x15"

All Chemco Pocket Bag Filters are available with a header or header and gasket option. Chemco's header option incorporates a galvanized metal frame on the front side of the filter which aids in sealing.

The optional gasket aids in cutting down on any particulate bypass. Please call for availability.



One Layer 2 Pocket Bag Filter



One Layer Tacky 2 Pocket Bag Filter

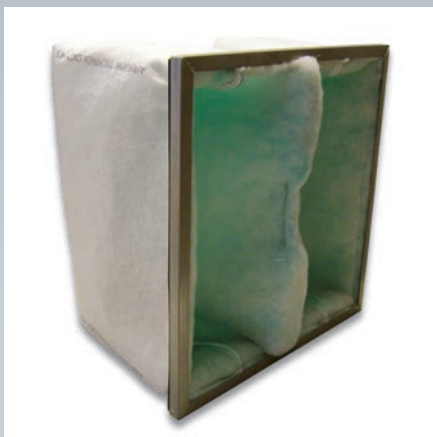


One Layer Tacky, One Layer 45% Media

PAINT ARRESTORS



One Layer EP, One Layer 65% Media



One Layer Tacky, One Layer 45% Media with Header and Gasket



Mach III and Mach II

ONE LAYER EP, ONE LAYER 65% MEDIA (no header)

Our highly efficient 2 pocket self sealing filter is also primarily used in wet spray applications.

CATALOG NUMBER

SIZE

202015BAFPCN

20"x20"x15"

202515BAFPCN

20"x25"x15"

242415BAFPCN

24"x24"x15"

All Chemco Pocket Bag Filters are available with a header or header and gasket option. Chemco's header option incorporates a galvanized metal frame on the front side of the filter which aids in sealing.

The optional gasket aids in cutting down on any particulate bypass. Please call for availability.

MACH II AND MACH III

The Mach II two-stage and Mach III three-stage arrestor systems meet the EPA method 319 requirements for the aerospace industry. The Mach II and Mach III are ideal where extremely high paint particulate capture efficiency is required.

CATALOG NUMBER

SIZE

202015MACH2

20"x20"x15"

202515MACH2

20"x25"x15"

242415MACH2

24"x24"x15"

202015MACH3

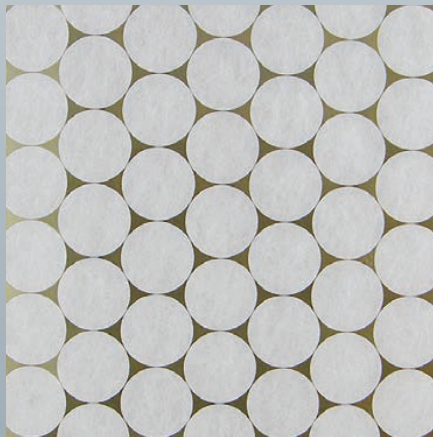
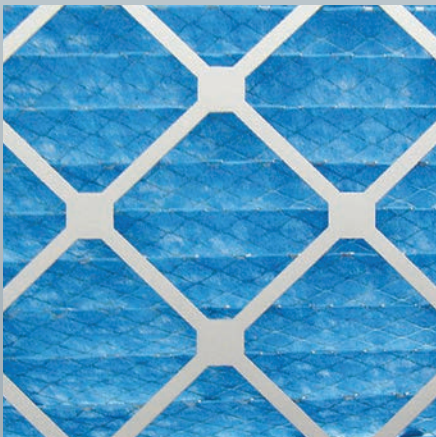
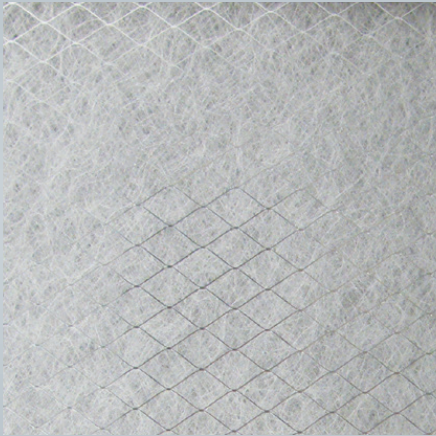
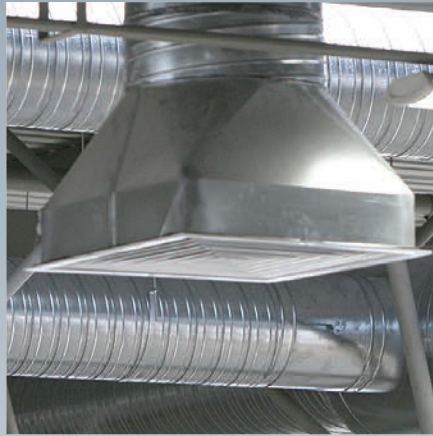
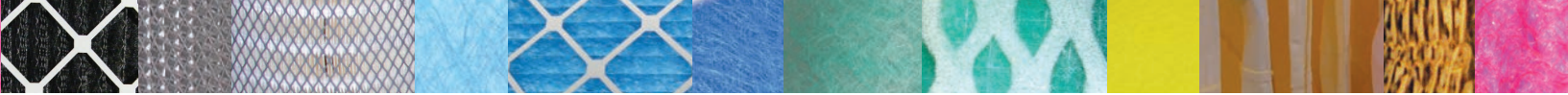
20"x20"x15"

202515MACH3

20"x25"x15"

242415MACH3

24"x24"x15"



INTAKE/ HVAC FILTERS



INTAKE/HVAC FILTERS



PAFIF



AFR-1 Intake Filter Media



FF-560 GX Intake Filter Media

PAFIF (polyester w/internal wire frame filter)

This self supported tackified polyester intake filter (Series 65) is designed for a velocity of up to 400 FPM. Unaffected by humidity, this intake filter has a low initial resistance which allows it to not shut down airflow upon installation.

CATALOG NUMBER	SIZE	PACKAGING
1620PAFIF	16"x20"x2"	20/carton
1625PAFIF	16"x25"x2"	20/carton
2020PAFIF	20"x20"x2"	20/carton
2020PAFIFE	20"x20"x1" ECONOMY	20/carton
2020PAFIFD	20"x20"x1" DRY	20/carton
2025PAFIF	20"x25"x2"	20/carton
2048PAFIF	20"x48"x2"	10/carton
2050PAFIF	20"x50"x2"	10/carton
20100PAFIF	20"x100"x2"	4/carton
2424PAFIF	24"x24"x2"	20/carton
ROLLGT	20", 36", 48", 60", 72"	135' rolls

**All sizes are available in 1" Economy or 1" Dry option.
For availability, call 1-800-323-0431.**

AFR-1 INTAKE FILTER MEDIA (diffusion media)

Series AFR-1 media is a scrim backed high quality intake filter used in air makeup units for spray booths. Constructed of 100% polyester filter media with an impregnated tackifier. AFR-1 is a popular filter media used in applications where dust control is of important concern. This intake filter media type boasts efficiency levels greater than 95% on particles 7-10 microns and greater.

CATALOG NUMBER	SIZE	PACKAGING
2020BKDMA	20"x20"	20/case
2025BKDMA	20"x25"	20/case
2020DMAFIFA*	20"x20"	20/case
2025DMAFIFA*	20"x25"	20/case

*Internal wire frame

Call for availability of custom cut pads and blankets.

FF-560 GX INTAKE FILTER MEDIA (premium diffusion media)

Series FF-560 GX media is specially designed as a premium intake filter media used in air makeup units for spray booths. This filter media is non-woven synthetic fiber based with a progressive density multi-layering construction. FF-560 GX filter media yields a high dust loading capacity, longer filter life and premium grade fractional efficiency. Efficiency levels are rated at 99+ % at 7-10 microns and greater. FF-560 GX is heat resistant and has a special tackifier which increases its performance in spray booths.

CATALOG NUMBER	SIZE	PACKAGING
2020BKDMF	20"x20"	20/case
2025BKDMF	20"x25"	20/case
2020DMAFIFF*	20"x20"	20/case
2025DMAFIFF*	20"x25"	20/case

*Internal wire frame

Call for availability of custom cut pads and blankets.

PLAF (pleated w/cardboard frame)

This cardboard framed panel air filter consists of pleated synthetic fibers with a metal grid support on one side.

CATALOG NUMBER	SIZE	PACKAGING
12241PLAF	12"x24"x1"	12/carton
12242PLAF	12"x24"x2"	12/carton
12244PLAF	12"x24"x4"	6/carton
14251PLAF	14"x25"x1"	12/carton
14252PLAF	14"x25"x2"	12/carton
16201PLAF	16"x20"x1"	12/carton
16202PLAF	16"x20"x2"	12/carton
16204PLAF	16"x20"x4"	6/carton
16252PLAF	16"x25"x2"	12/carton
18242PLAF	16"x24"x2"	12/carton
20201PLAF	20"x20"x1"	12/carton
20202PLAF	20"x20"x2"	12/carton
20204PLAF	20"x20"x4"	6/carton
20251PLAF	20"x25"x1"	12/carton
20252PLAF	20"x25"x2"	12/carton
20254PLAF	20"x25"x4"	6/carton
24241PLAF	24"x24"x1"	12/carton
24242PLAF	24"x24"x2"	12/carton
24244PLAF	24"x24"x4"	6/carton

*Popular sizes listed. All available in 1", 2" and 4" deep pleats.

PAF (polyester w/cardboard frame)

The PAF filter has a metal support grid system instead of a scrim back. The filter is 100% non woven polyester and is highly moisture resistant. UL 900 class 2 rated.

CATALOG NUMBER	SIZE	PACKAGING
14251PAF	14"x25"x1"	12/carton
14252PAF	14"x25"x2"	12/carton
16201PAF	16"x20"x1"	12/carton
16202PAF	16"x20"x2"	12/carton
16251PAF	16"x25"x1"	12/carton
16252PAF	16"x25"x2"	12/carton
20201PAF	20"x20"x1"	12/carton
20202PAF	20"x20"x2"	12/carton
20251PAF	20"x25"x1"	12/carton
20252PAF	20"x25"x2"	12/carton
24241PAF	24"x24"x1"	12/carton
24242PAF	24"x24"x2"	12/carton

**PLAF****PAF**

Do you have a Paint Booth Filtration problem? Chemco Technical Representatives are available to assist.

INTAKE/HVAC FILTERS



AF



CIF

AF (fiberglass w/cardboard frame)

AF is a fiberglass filter that features a scrim back on the air exit side. UL 900 class 2 rated.

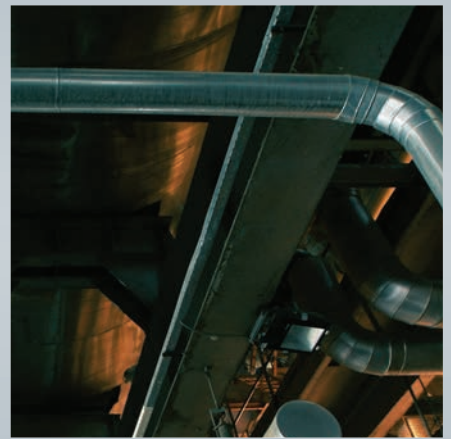
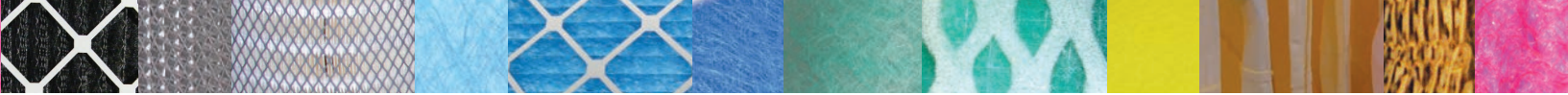
CATALOG NUMBER	SIZE	PACKAGING
15201AF	15"x20"x1"	12/carton
15202AF	15"x20"x2"	12/carton
16201AF	16"x20"x1"	12/carton
16202AF	16"x20"x2"	12/carton
20201AF	20"x20"x1"	12/carton
20202AF	20"x20"x2"	12/carton
20251AF	20"x25"x1"	12/carton
20252AF	20"x25"x2"	12/carton
24241AF	24"x24"x1"	12/carton
24242AF	24"x24"x2"	12/carton

CIF (charcoal impregnated pleated air filter)

The CIF carbon pleated filter is non woven media carbon filled with a moisture resistant frame. This filter provides a high removal efficiency of nuisance odors.

CATALOG NUMBER	SIZE	PACKAGING
16251PLAFCIF	16"x25"x1"	12/carton
16252PLAFCIF	16"x25"x2"	12/carton
2020PLAFCIF	20"x20"x1"	12/carton
20202PLAFCIF	20"x20"x2"	12/carton
2025PLAFCIF	20"x25"x1"	12/carton
20252PLAFCIF	20"x25"x2"	12/carton
24241PLAFCIF	24"x24"x1"	12/carton
24242PLAFCIF	24"x24"x2"	12/carton
24244PLAFCIF	24"x24"x4"	6/carton
20ROLLCIF	20"x100'	100' roll

Can't find what you are looking for? Chemco can help.
Call 1 800 323-0431.



POWDER AND DUST CARTRIDGES





80/20 Paper-Poly

CHEMCO CARTRIDGES FOR POWDER AND DUST COLLECTION

Regardless of the nature of your dust collection application, Chemco has the answer for all of your cartridge filtration needs. No matter what the load volume, micron size or shape of the particulate; whether the particulate is flammable, abrasive, hygroscopic, or agglomerating; whether the air is being returned to the plant or exhausted outside of the building; **Chemco has the solution to all your dust collection needs.**

CHEMCO MEDIA STYLES

80/20 (PP) PAPER-POLY BLEND

Chemco's 80/20 blend (PP) cartridges offer high efficiency, durability and performance appropriate for a wide variety of dust applications, including blast booths, carbon black, pharmaceutical, powder-coating and dry chemical processing. **Pleat spacing can be widened** for applications where larger or irregularly shaped dust particles enter the collector, such as fiberglass and composite grinding and tobacco processing.

Our 80/20 blend cartridges offer improved efficiency, moisture-resistance, and dust cake release without added pressure drop compared to 100% cellulose style filters.

Tomato cage supports can be used instead of outer screens for coarse wood sanding, chaffe-tolerant grain handling, and some buffing applications.

FLAME-RETARDANT 80/20 (DF)

Chemco builds flame-retardant 80/20 blend (DF) dust cartridges for applications where sparks or flammable dust can enter the dust collector, such as welding, plasma cutting, flame-cutting, laser, metallizing and ferrous metal grinding. As is the case with our regular 80/20 cartridges, flame-retardant filters can be made with **wider pleat spacing** as well, for applications like coarse grinding or ferrous metals.

NANOFIBER (NP)

Chemco's MERV 15 rated, "Nano-fiber" (NP) cartridge filter technology sets a new standard in fractional efficiency and extended service life for cartridge filtration. Offering near PTFE-membrane performance characteristics at only one-third the cost.

Nano-fiber offers significantly greater fractional efficiency, extended filter life and longer maintenance service intervals than do untreated substrates. In addition Nano fibers are stronger and more durable, allowing the cartridge to withstand more stringent pulse-cleaning conditions

Nano-fiber cartridge filters are an ideal choice for FDA-compliant or clean room environments where high efficiency is required, as well as those applications where heavy dust loading, hazardous dust or challenging conditions typically result in cartridge blinding and shorter service life.

Nano-fiber media also outperforms in applications that can produce soot or unburned hydrocarbons, such as welding or metallizing. Nano-fiber is also offered in a flame-retardant (NF) version for applications where sparks or flammable dusts are possible.

Nano-fiber cartridges are also the ideal choice for **powder reclaim operations**. In addition, powder coaters can use nano-fiber filters where heavy loading or finer micron-sized powder can lead to cartridge blinding and shorter service life (i.e., users spraying black-colored powder or powder-coating operations equipped with combination cyclone/cartridge-style collection systems).

SPUN-BOND POLYESTER (PC)

Chemco's 100% spun-bond polyester (PC) media is a higher efficiency, "surface-loading" filter media featuring wider pleat-spacing than all depth-loading filters, resulting in enhanced cleaning capability during back purging cycles and lower pressure drop. Our spun-bond polyester cartridges can be pulsed cleaned at lower PSI, saving on compressed air and energy costs. Unlike filters made with cellulose media, spun-bond polyester filters can be washed and reused with soap and water, do not require outer screen support and do not lint.

Chemco's 100% spun-bond polyester dust cartridges are ideal for any applications where abrasion-resistant or high-strength media is required. Paper, cardboard, cement, cocoa, coffee, aluminum oxide and rubber grinding dust applications are ideal for this media style.

SPUN-BOND POLYESTER (KC)

Chemco is one of the few sources in the powder and dust collection market that offer the 100% spun-bond polyester (KC) media with the advanced "dual-dimple" pleat design. This superior pleating technology substantially improves the overall performance and service life of spun-bond polyester media, even under heavy dust loading. By imparting the dual (opposing) dimples down the length of each individual pleat, uniform pleat spacing and full utilization of filter surface area is guaranteed, resulting in optimal cleaning capability of back purging cycles and lower pressure drop.

TREATED POLYESTER AND SYNTHETIC MEDIA

For applications requiring high strength media and superior dust release characteristics (i.e., cement, cardboard, paper, carbon black, and some rubber grinding) we offer **spun-bond polyester media options with either hydro/oleophobic treatment (KW) for moisture and oil resistance, as well as aluminized (KL) finishes for static dissipation.**

For applications where moisture is an issue or those with larger particles, agglomerative or hygroscopic dusts, such as salt, sugar, clay, cocoa, coffee, detergents, milk powder, and stearates; **synthetic media (SP) is available in a 90/10 polyester/fiberglass blend.**

For high temperature applications we offer a high efficiency, **proprietary blend of 10 oz.**

PTFE (PT) MEMBRANE

Higher efficiency applications such as food, asbestos, pesticides, fluidized bed dryers and agglomerating materials, **PTFE membrane-laminated (PT) cartridges** are also available.

Chemco's top of the line PTFE-laminated powder cartridges offer the best filtration technology available today. Our expanded PTFE is laminated over a 100% spun-bond polyester substrate which providing lower surface resistance and better release properties than any other filter in the powder market today. Its slick and microporous surface offers 100% efficiency at 1 micron and above, does not require seasoning, and is the optimum choice for ultra-fines, high moisture or humid environments. The PTFE membrane is also the favorite choice of the automotive and appliance industries where nothing but the finest quality finish will do.



Spun-Bond Poly

Chemco has a solution for all your Powder and Dust collection needs. Call 1 800 323-0431 for assistance.



POWDER AND DUST CARTRIDGES

ALSO AVAILABLE:

- **Stainless Steel construction** for use in food and drug grade or chemically corrosive applications
- **Variable pleat count and depth**
- **Precoated or carbon-impregnated treatments** upon request
- **Other media, special endcaps and custom sizes** to meet specific needs of any application
- **Polyisoprene, neoprene or silicone gaskets**
- **Proprietary OEM designs**

OEM REPLACEMENTS

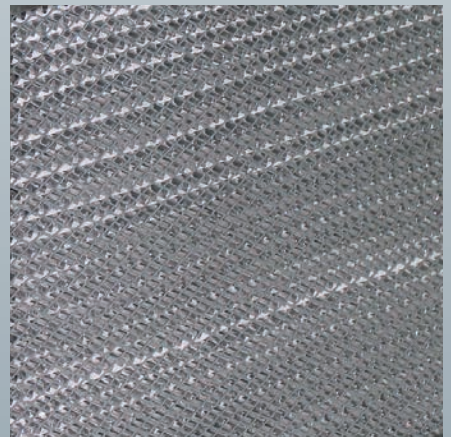
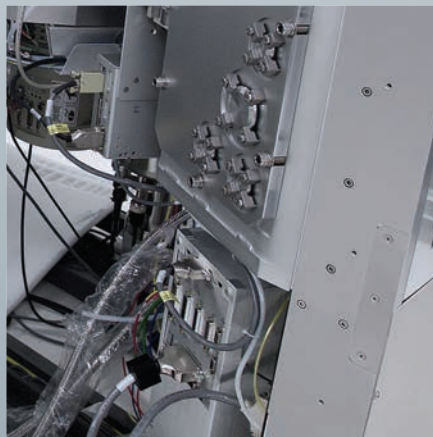
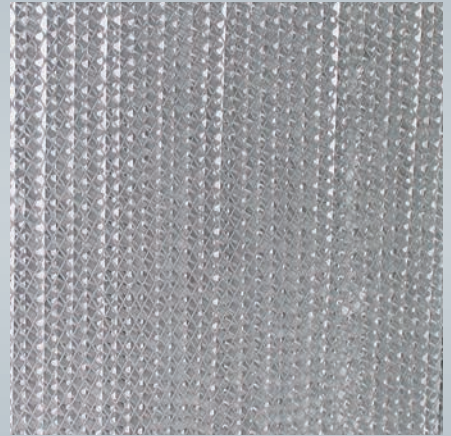
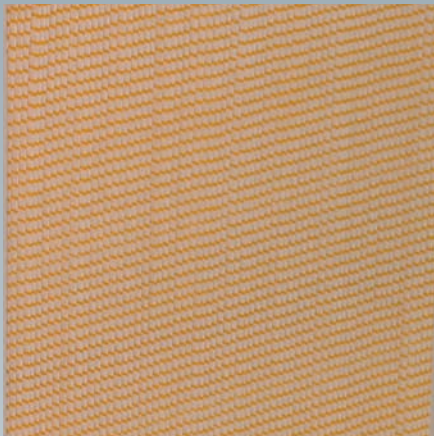
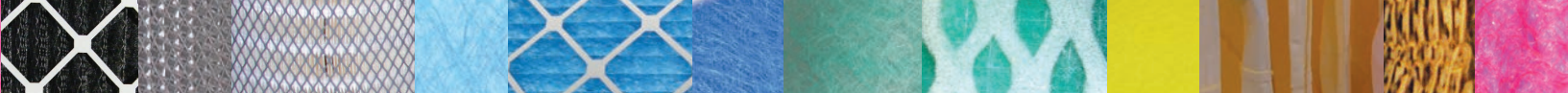
Chemco manufactures custom designs, as well as replacement cartridges and upgrades for the following OEMs and more...

- | | | |
|------------|-------------------|--------------------|
| • AAF | • AirFlow Systems | • Binks Sames |
| • Blastec | • Camfil-Farr | • Colmet |
| • Deimco | • Donaldson | • Global Finishing |
| • Hoffman | • Iontech | • ITW/Gema |
| • MAC | • Micro Air | • Nordson |
| • Pangborn | • Ramco | • Torit |
| • UAS | • Wagner | • Wheelabrator |

INDUSTRIES WE SERVE

- | | |
|-----------------------------|-----------------------------|
| • Abrasive Blasting | • Appliance Manufacturing |
| • Asbestos | • Auto and Parts Operations |
| • Carbon Black | • Cement Production |
| • Chemical Plants | • Coal Processing |
| • Composites and Fiberglass | • Food Processing |
| • Foundries | • Grain and Feed |
| • Laser/Plasma Cutting | • Lawn/Farm Equipment |
| • Metal Grinding | • Military |
| • Mineral Processing | • Nonferrous Metals |
| • Pharmaceutical | • Plastics |
| • Powder Coating | • Pulp and Paper |
| • Rubber | • Steel mills |
| • Textile | • Welding |
| • Wood and Forest Products | • Wood and Metal Furniture |

Chemco has a solution for all your Powder and Dust collection needs. Call 1 800 323-0431 for assistance.



FINAL FILTERS





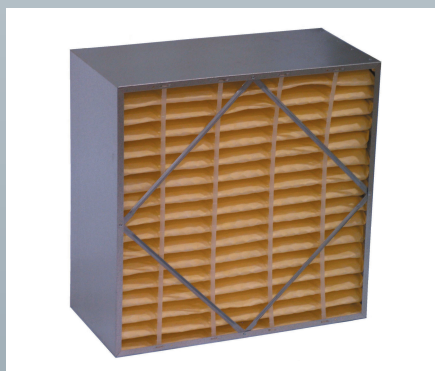
Multi-Cell Final 95% efficiency



Multi-Cell Final 95% efficiency (single header)



Multi-Cell Final 95% efficiency (double header)



Rigi-Pak Final 95% efficiency

MULTI-CELL FINAL 95% EFFICIENCY

Chemco's multi-cell filter is one of the most popular final filters in use throughout the USA by OEM manufacturers. This filter incorporates a metal outer screen to protect and hold the media pleats together. This 95% efficient filter is fabricated with pleated media packs made of water-resistant all-glass micro-fiber media encased in polypropylene housings. Sizes listed are nominal and not actual.

CATALOG NUMBER

SIZE

12241295ASH	12"x24"x12"
24201295ASH	24"x20"x12"
24201295ASH	24"x20"x12"
24241295ASH	24"x24"x12"
25201295ASH	25"x20"x12"

All Multi-Cell Final Filters are available in single or double header design.

RIGI-PAK FINAL 95% EFFICIENCY

The Rigi-Pak Final filter has plastic separators that uniformly divide and hold the pleats in place instead of customary metal screening. Our separators do not detract from efficiency and performance of this filter, but do lower cost. This filter has no header and the rated efficiency is 95%.

CATALOG NUMBER

SIZE

20201295RPAK	20"x20"x12"
20241295RPAK	20"x24"x12"
24241295RPAK	24"x24"x12"

All Rigi-Pak Final Filters are available in single or double header design.

MICRO PLEAT FINAL 95% EFFICIENCY

Our Micro Pleat Final filter provides more media surface area for superior retention of smaller particulates. This filter also has a polypropylene frame which allows the user to get this pleat pack in smaller quarter applications as compared to flimsy cardboard frame filters. This filter can be installed where moisture and bacteria build up is an issue.

CATALOG NUMBER

SIZE

FFMP1625295	16"x25"x2"
FFMP1625495	16"x25"x4"
FFMP2020295	20"x20"x2"
FFMP2020495	20"x20"x4"
FFMP2024295	20"x24"x2"
FFMP2024495	20"x24"x4"
FFMP2025295	20"x25"x2"
FFMP2025495	20"x25"x4"
FFMP2424295	24"x24"x2"
FFMP2424495	24"x24"x4"

**Can't find what you are looking for? Chemco can help.
Call 1 800 323-0431.**

CELLULOSE FINAL FILTERS

100% cellulose fiber in a galvanized frame. 95% ASHRAE efficiency. An OEM replacement offering.

CATALOG NUMBER

SIZE

FLPAP1424	14"x24"x2"
FLPAP1723	17"x23"x2"
FLPAP2420	24"x20"x2"
FLPAP2424	24"x24"x2"
FLPAP24203	24"x20"x3.5"

CHEMCO HEPA FILTERS

Chemco HEPA Filters are designed to provide the highest level of filtration available for commercial and industrial applications. They are widely used in hospitals, clean rooms, pharmaceutical plants, and in hundreds of other systems where clean air is critical in the protection of people, processes and equipment. All HEPA Filters are constructed using only the highest quality components and are available in efficiencies of 99.97%, 99.99% and 99.999% on 0.3 micron particles. Standard construction Chemco HEPA Filters are manufactured with galvanized steel cell sides (UL Class 1) or particle board cell sides (UL Class 2). Multiple cell side options are also available.

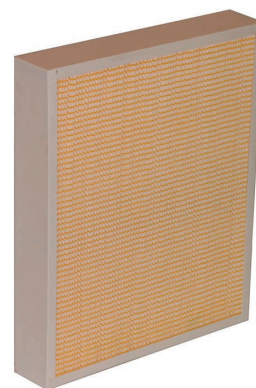
Chemco Standard Capacity HEPA Filters offer an excellent combination of high efficiency, factory tested performance, and economical initial purchase price. The filter is designed to operate under normal conditions, with the 12" deep model capable of maintaining a pressure drop of 1.0" w.g. at airflows up to 260 feet per minute.

Chemco High Capacity HEPA Filters are designed to operate in applications with higher airflows up to 500 FPM (Feet per Minute). Constructed with approximately 50% more filter media than Standard Capacity Filters, Chemco's High Capacity HEPA Filters can operate at velocities up to 2000 CFM with only a slight increase in pressure drop and offer several additional performance advantages: lower average pressure drop at equivalent airflows; can operate at higher airflows with only slight increase in resistance; extended media means longer service life, fewer filter changes, and reduced maintenance and disposal costs; reduced space requirements for filter banks, fewer filters required; excellent choice for new systems and renovations of existing systems.

Call for availability and more information.



Rigi-Pak Final 95% efficiency (single header)



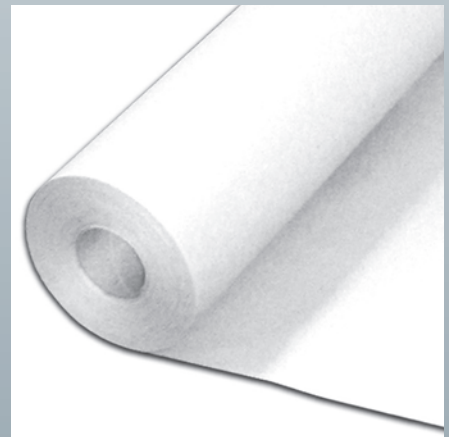
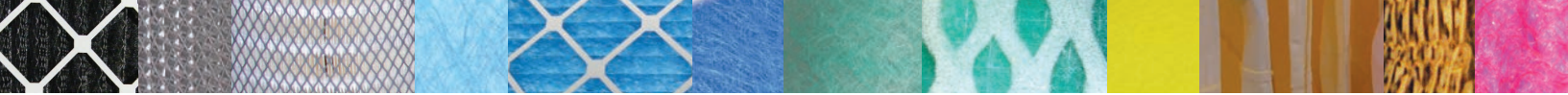
Micro Pleat Final 95% efficiency



Cellulose Final



HEPA Final Filters



FLOOR COVERING



Why you need to use Chemco's Flame Retardant Surface Protection

Virtually all fire inspectors and insurance underwriters require the use of removable coatings and coverings in and around spray booths. With safety and fire regulations increasing each year, why wait for that unannounced safety inspection to get your facility OSHA compliant. For a minimal investment you can ensure safety and fire protection of your factory and employees.

HIGH STRENGTH FLOOR COVERING

Chemco's strongest surface protection stands up to the heaviest machinery and foot traffic. Its unique, non-porous design prevents penetration to the substrate beneath. Popular with government and military operations, this exclusive Chemco tear-resistant product is highly durable. Color: white.

CATALOG NUMBER

SIZE

36HSFRP	36"x300'
48HSFRP	48"x300'
60HSFRP	60"x300'
72HSFRP	72"x300'

100# WHITE FLAME RETARDANT FLOOR PAPER

Our best selling surface protection is as tough as it is popular. The 100# paper weight ensures durability and absorption even under constant operator traffic. Its bright white color promotes booth illumination. The 100# white is conveniently marked with its flame retardant rating for fast easy compliance with inspectors. Available in a wide array of sizes and it works well on all spray booths.

CATALOG NUMBER

SIZE

36SKFRP	36"x300'
42SKFRP	42"x300'
60SKFRP	60"x300'
72SKFRP	72"x300'
84SKFRP	84"x300'

80# WHITE FLAME RETARDANT FLOOR PAPER

Chemco's highly efficient, white 80# surface protection is ideal for light spray operations.

CATALOG NUMBER

SIZE

3680FRP	36"x300'
4280FRP	42"x300'
6080FRP	60"x300'
7280FRP	72"x300'
8480FRP	84"x300'

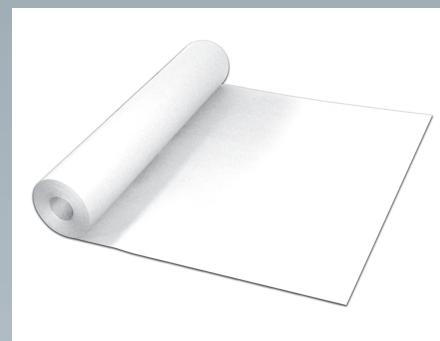
70# WHITE FLAME RETARDANT FLOOR PAPER

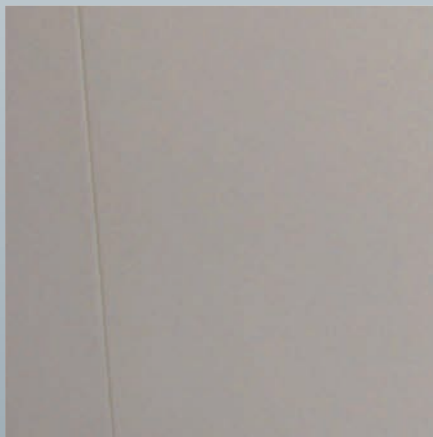
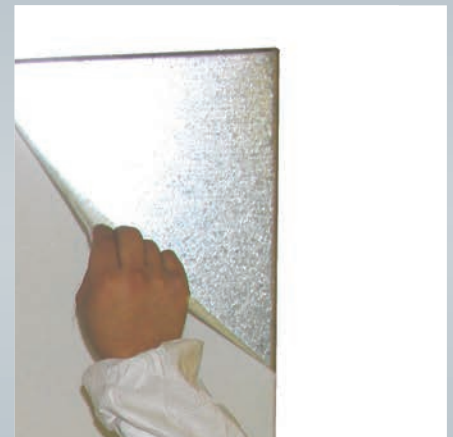
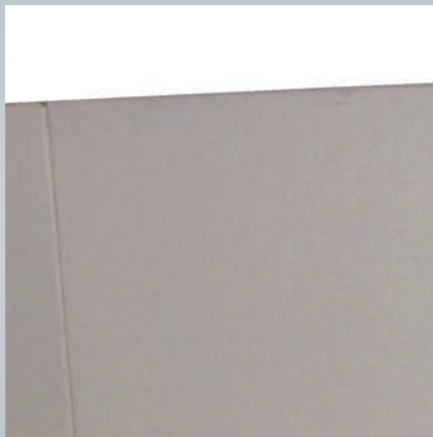
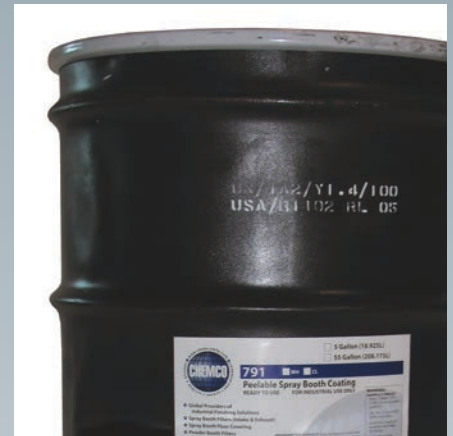
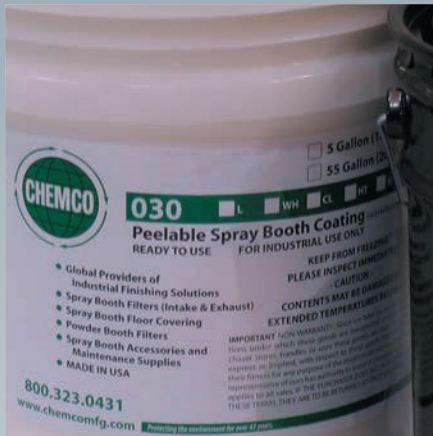
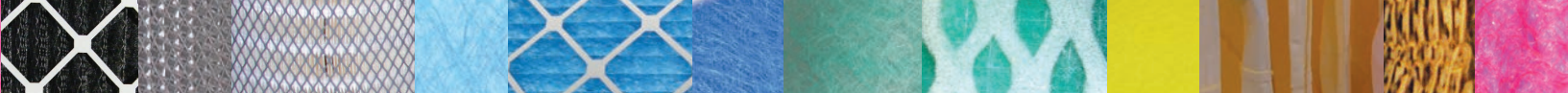
This economical surface protection is white in color, easy to use, and available exclusively from Chemco in 500' rolls. Popular in mixing rooms and low-traffic areas, this product offers immediate OSHA compliance at minimal cost.

CATALOG NUMBER

SIZE

36NTFRP	36"x500'
42NTFRP	42"x500'
60NTFRP	60"x500'
72NTFRP	72"x500'





REMOVABLE SPRAY BOOTH COATINGS



WATER BASED SPRAY BOOTH COATINGS

030-WH WHITE PREMIUM PLUS PROTECTIVE COATING

030-WH White Premium Plus is the highest quality water based formula available in the world and it is by far the easiest to remove of any strippable coating in the marketplace today. It can be applied to the widest range of surfaces.

030-L WHITE PREMIUM

030-L is Chemco's most popular water-based formula in the marketplace. The bright white color and high tensile strength make it an ideal choice for safety conscious spray booth operators. This safe, non-hazardous formula dries to a white finish.

030-CL CLEAR

Our **030-CL** is the premier clear water-based booth coating for spray booth operators. This safe, non-hazardous formula dries to a clear finish for windows, lights, and pre-coated booths.

030-HT AND 030-HTC WHITE AND CLEAR HIGH TEMPERATURE

Chemco's **030-HT** and **030-HTC** are our strippable coatings for the automotive industry. They feature the same benefits as our **030-L** and **030-CL**, but with a temperature resistance of 225°.

030-E WHITE ECONOMY

Chemco's **030-E** is our economy grade low cost offering of a water based peelable booth coat.

030-FD FAST DRY

Chemco's **030-FD** "fast dry" white water based peelable coating is formulated with over 50% solids content, providing more square foot coverage per gallon than any of our booth coating offerings. Re-coating spray booth walls with this product takes less time and material, reduced dry time, hence decreasing production down time.

030-TK, DR, WHITE AND CLEAR WASHABLE COATING

Chemco offers a full line of washable spray booth coatings. Available in white and clear as well as Dry-Touch, and Tacky-Touch, each of these coatings is easy to apply and will wash off with a pressurized water spray.

030-FT FREEZE-THAW

Chemco's **030-FT** is a 5-cycle freeze-thaw water based peelable coating that facilitates shipping in the cold winter months. The color is an eggshell-white.

Please note: If the **030-FT** arrives frozen, it must be stored above freezing for a minimum of 72 hours and allowed to return to ambient temperatures. After the product thaws, it must be agitated. At this point, it is ready for application. Failure to allow proper thawing will result in a loss of peelability and coverage.



Five gallon pails



55 gallon drum

**Can't find what you are looking for? Chemco can help.
Call 1 800 323-0431.**

SOLVENT BASED SPRAY BOOTH COATINGS

791-WH WHITE PREMIUM

Chemco's 791-WH booth coating sets the standard for solvent based removable coatings. This highly strippable, fast drying, and easy to apply product is our largest selling.

791-CL CLEAR COATING

This crystal clear version of the 791-WH is ideal for windows, lights, and pre-coated booths. A fast drying product that is easy to apply.

PROTECTIVE COATING FIVE GALLON PAILS

BASE	CATALOG NUMBER	COLOR	APPLICATION	COVERAGE
Water	05WH030	White	Premium tensile strength and peelability	225 SF@2mil
Water	05L030	White	Peelable	250 SF@2mil
Water	05CL030	Clear	Peelable	250 SF@2mil
Water	05HT030	White	Heat resistant to 225°, peelable	225 SF@2mil
Water	05HT030C	Clear	Heat resistant to 225°, peelable	100 SF@2mil
Water	05E030	Egg Shell White	Economy, peelable	245 SF@2mil
Water	05FD030	Egg Shell White	Fast dry, peelable	350 SF@2mil
Water	05TK030W	White	Tacky touch, washable	225 SF@ 2mil
Water	05TK030	Clear	Tacky touch, washable	100 SF@2mil
Water	05DR030W	White	Dry touch, washable	225 SF@2mil
Water	05DR030	Clear	Dry touch, washable	100 SF@2mil
Water	05FT030	Egg Shell White	Freeze-thaw, peelable	275 SF@2mil
Solvent	05WH791	White	Peelable, fast drying, highly strippable	225 SF@2mil
Solvent	05CL791	Clear	Peelable, fast drying, highly strippable	125 SF@2mil

*Please note that all Square Footage figures are approximate and on a per gallon basis.

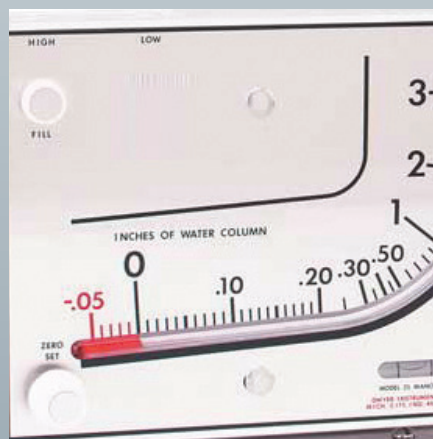
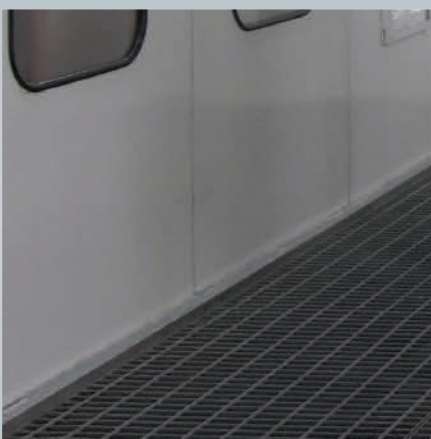
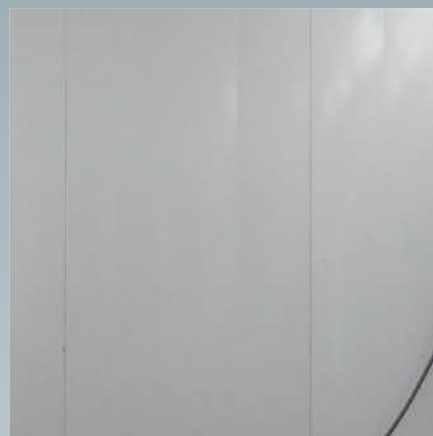
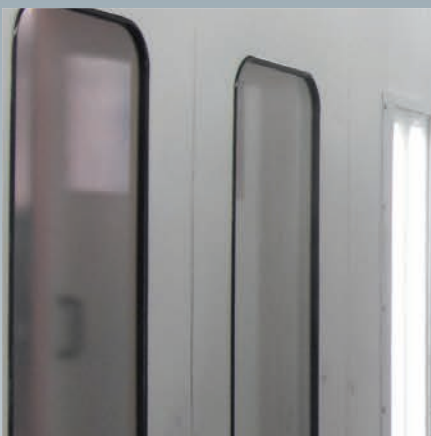
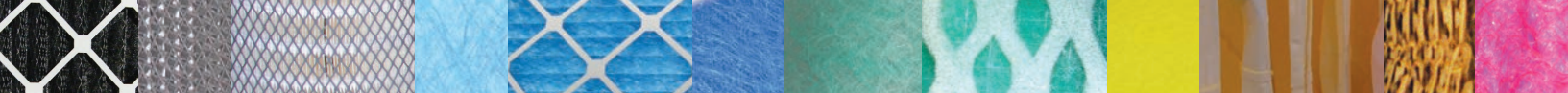
PROTECTIVE COATING 55 GALLON DRUMS

BASE	CATALOG NUMBER	COLOR	APPLICATION	COVERAGE
Water	55WH030	White	Premium tensile strength and peelability	225 SF@2mil
Water	55L030	White	Peelable	250 SF@2mil
Water	55E030	Egg Shell White	Economy, peelable	245 SF@2mil
Water	55FD030	Egg Shell White	Fast dry, peelable	225 SF@2mil
Water	55FT030	Egg Shell White	Freeze-thaw, peelable	350 SF@2mil
Solvent	55WH791	White	Peelable, fast drying, highly strippable	225 SF@2mil

*Please note that all Square Footage figures are approximate and on a per gallon basis.

Please note: Most all of our coatings are available in 55 gallon drums or 5 gallon pails. Please check with your local Chemco representative for size availability for your selected coating.

Call Chemco for all your Paint Booth Maintenance needs.



ACCESSORIES



PRESSURE POT LINERS

Chemco's line up of disposable pressure pot liners are an economical choice to fit various sizes of Binks, Graco, or DeVilbiss pressure pots. The costly and time consuming job of cleaning pressure pots is eliminated with the use of Chemco's disposable liners. The savings in time and labor is far greater than the cost of the liner. Booth versatility is also maximized as disposable liners make it quick and easy to switch from one paint or coating to another. Liners containing unused material can be set aside for later use if desired. Chemco's vacuum formed disposable liners are particularly advantageous when the spray medium is unusually difficult to clean up, such as two-package urethanes, epoxy adhesives.

CATALOG NUMBER	SIZE (GAL.)	CAPACITY	STYLE*	COMPATABILITY**	PACKAGING
2GALLBPPL	2	2.8	RB	B, GR	20-100
2GALLDPPL	2	2.8	WT, RB	DB	10
2GALLHPPL	2	N/A	FB	H	20
5GALLBPPL	5	9.8	RB	B	24
5GALLDPPL	5	9.8	WT, RB	DB	20
5GALLGPPL	5	9.8	F	B, GR	10-100
10GALLBPPL	10	11.8	F	B	12
10GALLDPPL	10	11.8	FB	DB	8
15GALLDPPL	15	19.8	FB	DB	10

* RB-Round Bottom, WT-Wide Top, F-Flat Bottom, FB-Flexible Bottom

** B-Binks, GR-Gracco, DB-DeVilbiss, H-Hedwin

CHEMGUARD

Chemco's popular ChemGuard protective film is an easy solution to windows and lights. this highly durable, self releasing film allows for easy application and removal. Available in 12"x100' and 18"x100' rolls. 24 hour shipping is also available.

CATALOG NUMBER	QUANTITY
1210024	12"x100'
1810024	18"x100'

HOLDING FRAMES

Chemco offers 20"x20" and 20"x25" galvanized steel holding frames to fit any booth.

CATALOG NUMBER	SIZE
2020FRAMES	20"x20"
2025FRAMES	20"x25"

RETAINING GRIDS

Chemco's retaining grid system snap into your existing frame and incorporate impaling prongs which allow for quick placement of paint arrestor media pads.

CATALOG NUMBER	SIZE
2020GRIDS	20"x20"
2025GRIDS	20"x25"
2436GRIDS	24"x36"



Pressure pot liners



Chemguard



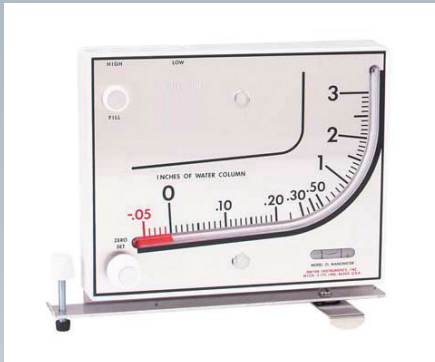
Holding frame



Retaining grid



Quick Lock



Manometer

QUICK LOCK TRACK SYSTEM

The Quick Lock Filter Loading System is a fast and economical way to add that second layer of exhaust filtration to your spray booth. This rigid vinyl material house a groove to hold filter blanket media that can be cut from a roll and installed as needed. There are no gaps, sags or tears when using this product — compared to conventional hooks. Quick Lock is available in 5' wide pieces and are packaged individually.

CATALOG NUMBER	SIZE
QUICK LOCK	5'

MANOMETER

Manometer gauge helps ensure you achieve maximum life of your spray booth exhaust filters. High quality and durable to make your spray booth safe and efficient.

CATALOG NUMBER
MANOMETER

Call Chemco for all your
Paint Booth Maintenance needs.



CHEMCO MANUFACTURING — SALES TERMS AND CONDITIONS

PRICING

Your Chemco account representative will provide you with current pricing at any time. Prices are subject to change without notice.

MINIMUM ORDERS

All products must be ordered in quantities as provided by this catalog.

PRIVATE LABELING

CHEMCO can provide private labeling if the product category ordered meets the required quantity minimum. Setting up a private label account requires extra lead time to process artwork and receive the necessary approvals. An initial artwork set up charge will apply.

TERMS

ALL Orders are net 30 days. Past due invoices are subject to a 1.5% per month late fee.

CREDIT CARDS

CHEMCO accepts Visa, MasterCard, and American Express for payment. Credit card payments for merchandise will be accepted and processed only at the time the order is shipped and invoiced. Credit card payments will also be accepted for outstanding invoices.

FREIGHT

The customer is responsible for all freight charges on all merchandise order quantities.

DROP SHIPPING

CHEMCO can drop ship your order if requested.

PHONE SCHEDULING OF DELIVERIES

If there is a charge assessed by the freight companies for phone scheduling of deliveries. Payment of this charge is the customers responsibility, and will be included on your invoice.

PROOF OF DELIVERY

Proof of delivery is available for a \$10.00 charge.

BACK ORDERS AND DISCONTINUED PRODUCTS

All back ordered products will be shipped as soon as they are made available. Customers will be notified of backorders, and product status can be obtained anytime from your CHEMCO representative or our customer service department. The customer also will be notified if a product in our catalog has been discontinued. If available, a substitute product will be recommended.

ADDITIONS OR CANCELLATIONS TO AN EXISTING ORDER

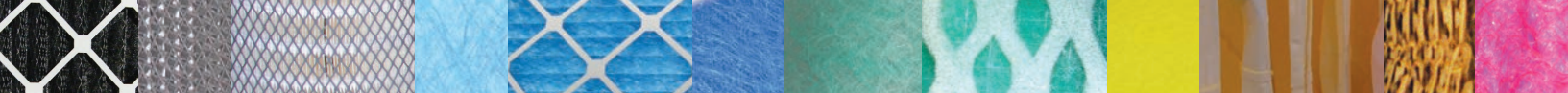
CHEMCO will do its best to accommodate changes or additions to an existing order. Additions to an existing order that has already been shipped will be treated as a new order, subject to the same terms and conditions. Cancellation of all or part of an existing order will be processed if possible; however, CHEMCO cannot be held responsible for merchandise that has already been shipped or is in the process of being shipped. This policy does not apply to private label orders.

RESTOCKING

Products ordered in error may be returned with a Chemco issued return authorization (RMA) from CHEMCO. Invoice number and order date must be supplied. Authorization to return products must be requested within 45 days from the date of the invoice. All returned products are subject to a 20% re-stocking fee plus freight. Discontinued product may not be returned at any time.

WARRANTY

Individual product warranties vary. See your CHEMCO representative for details. CHEMCO MANUFACTURING COMPANY warrants the buyer that CHEMCO products will be free from defects in material and workmanship for the listed warranty period. Any defective CHEMCO product that fails during the applicable warranty will be replaced free of charge, exclusive of labor. The defective product must be undamaged and returned to CHEMCO at 515 Huehl Road, Northbrook, IL 60062 for inspection. CHEMCO's obligation is limited to replacement of goods that are proven to be defective. The full warranty period, for any defective CHEMCO product actually purchased by the buyer, will apply to its replacement. Upon receipt of returned goods, Chemco, will check all product for personal damage. These warranties and remedies do not apply to any products or components that have been subject to misuse (including any use in violation of CHEMCO's instructions for that product) and neglect (including inadequate maintenance, improper storage, incorrect installation or that have been damaged in transit). The forgoing warranties and remedies are exclusive and there are no other warranties, oral or written, expressed or implied, with respect to any products sold hereunder, whether as to merchantability fitness for a particular purpose or any other matter. CHEMCO will not, under any circumstances, whether as a result of breach of contract, breach of warranty, tort or otherwise, be liable for consequential, incidental, special or exemplary damages including, but not limited to, loss of profits, revenues, loss of use or damage to any associated equipment, cost of capital, cost of substitute products, facilities or services, downtime costs, or claims of buyer's customers. Liability on any claim of any kind for any loss or damage arising out of, resulting from, or concerning any aspect of this agreement or from the products or services furnished hereunder, shall not exceed the price of the specific product or shipment that gives rise to claim. This warranty is void if payment in full is not made in accordance with the invoice terms. Warranty periods become effective with the date of purchase.



CHEMCO MANUFACTURING COMPANY

515 Huehl Road, Northbrook, IL 60062-2336

800-323-0431 • FAX 800-336-7706 • www.chemcomfg.com